



Quickstart-Installationshandbuch für das **ALLIGATOR sens.it™** Programmiergerät und die Programmiersoftware.



Quick Start Installation Guide for **ALLIGATOR sens.it™** Programming Tool and Programming App.



Guía de instalación rápida para la **Herramienta de programación y Aplicación de programación ALLIGATOR sens.it™**.



Guide d'installation et de démarrage rapide pour l'**outil de programmation et l'application de programmation ALLIGATOR sens.it™**.



Guida rapida di installazione per lo **Strumento di programmazione e l'applicazione di programmazione di ALLIGATOR sens.it™**.

[www.alligator-sensit.com/download](http://www.alligator-sensit.com/download)

1



5

VIN Make & Model

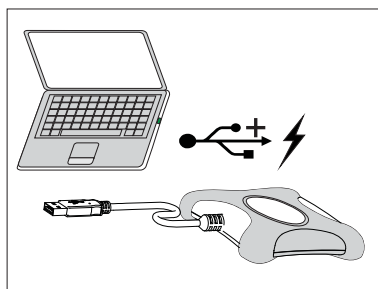
Vehicle Year

Vehicle Make

Vehicle Model

Vehicle Identifier

2



6

Sensor Programming

Technical Helpline  
Unknown  
Welcome user

Sensor Programming Customer Management Coverage List

Select new vehicle

Vehicle details Relearn

Vehicle 2012 TOYOTA COROLLA

Year 2012

Make TOYOTA

Model COROLLA

Submodel Base - Exc. Japan Built Veh

Mileage  miles

Sensor update process complete!

Fire details ID Location

OE Manufacturer Pacific

OE Part Number 42607-06011

OE Frequency 315 MHz

AutoGenerate ID

OE Sensor ID (hex) 5576FAA

Reason? Battery Empty

Click to program sensor ->

Sensor Details Installation

Type RS2 - Dip Pin

Frequency 315 MHz

Sensor ID 5576FAA

Date 9/6/2012

Mileage

3

Welcome to ALLIGATOR sens.it

Login Contact

Username

Password

Remember Me

Register Now

Forgot Password

Language

7

AutoGenerate ID

(dec)

Click to program sensor ->

4



8

Bitte beachten Sie das in der Box beiliegende Installationshandbuch für weitere Informationen oder besuchen Sie uns auf:  
Please check the installation manual inside the box for further information or visit us on:  
Compruebe el manual de instalación del interior de la caja para más información o visítenos en:  
Veuillez consulter le manuel d'installation dans le carton pour de plus amples renseignements ou visitez notre site:  
Consultare il manuale d'installazione all'interno della scatola per ulteriori informazioni, oppure visitare il nostro sito all'indirizzo: